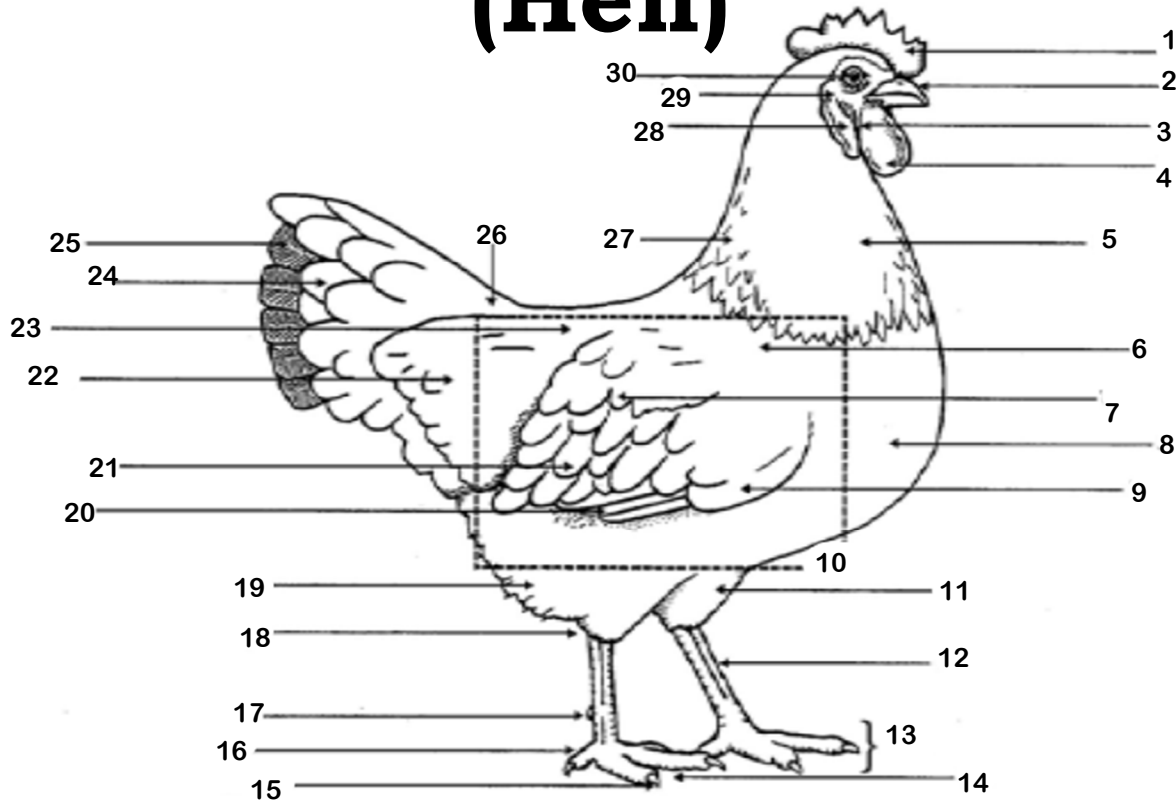


# Parts of a Chicken (Hen)



Write in the number that corresponds to the correct part of the animal.

- |              |                   |                   |
|--------------|-------------------|-------------------|
| ___ Back     | ___ Fluff         | ___ Sweep of Back |
| ___ Beak     | ___ Foot          | ___ Tail Coverts  |
| ___ Body     | ___ Hock          | ___ Thigh         |
| ___ Breast   | ___ Main Tail     | ___ Throat        |
| ___ Cape     | ___ Neck Feathers | ___ Toe           |
| ___ Comb     | ___ Primaries     | ___ Toenail       |
| ___ Cushion  | ___ Secondaries   | ___ Wattle        |
| ___ Ear      | ___ Shank         | ___ Web           |
| ___ Ear Lobe | ___ Shoulder      | ___ Wing Bow      |
| ___ Eye      | ___ Spur          | ___ Wing Coverts  |